

# KyTools-IpManager

## IP Address Management Software

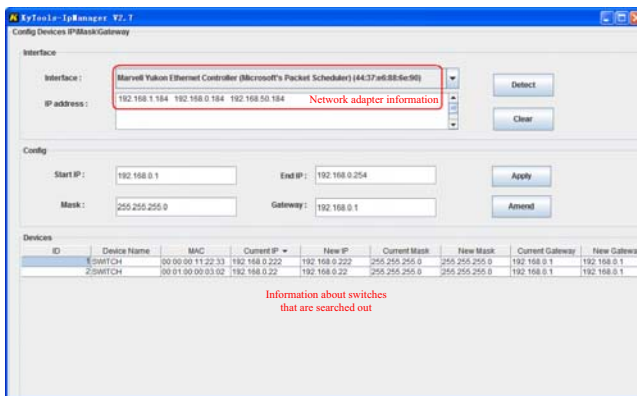


- Automatically searches for IP addresses of switches on a network.
- Highlights information about switches that encounter an IP address conflict in red.
- Supports automatic and manual allocation of IP addresses, subnet masks, and gateway addresses.
- Links to the Web management page.
- Locates a specified device rapidly in special lighting mode.

## Product Specifications

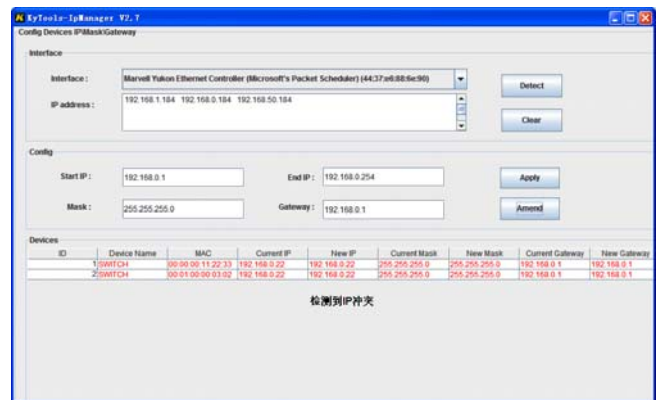
### Searching for IP addresses

Searches for and lists IP addresses of all switches in the same network segment (the function needs to be supported on the device side).



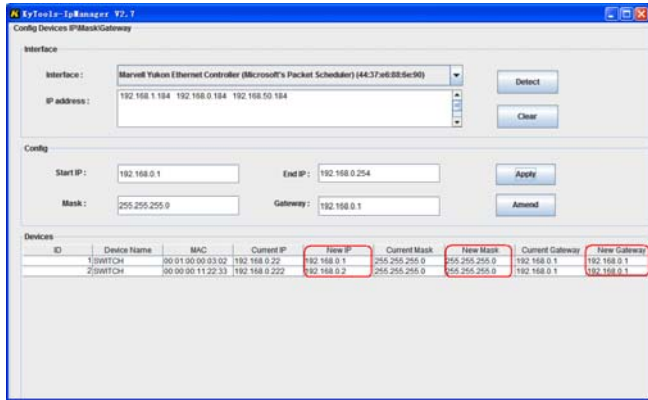
### Detecting IP address conflicts

Highlights information about switches that encounter an IP address conflict in red.



### Supporting automatic allocation of IP addresses

Sorts the switch information list by ID, MAC address, or IP address in ascending or descending order.  
 Allows setting the IP address allocation range, subnet mask, and gateway address, and automatically allocates IP addresses to switches that are searched out one after another.



### Supporting manual allocation of IP addresses

Allows setting the IP address, subnet mask, and gateway address for a specified switch manually.

### Linking to the Web management page

Links to the Web management page of a specified switch.

### Rapidly locating a device

Enables an indicator on the front panel to blink or light on through a lighting operation, so as to rapidly locate a specified device.

### The following devices are supported currently:

- SICOM3028GPT series devices
- SICOM3306PT series devices

## » Purchase Information

Product Model	Description
KyTools-IpManager	IP address management software for KyTools series — CD/DVD ROM