

# Kyvision3.0



## Network Management Software

- High performance network management software, supports 10 users at the same time and can monitor up to 1000 devices
- Auto-detection of devices, and real-time event alerts to user
- Auto-generation of network topology with circular or square layout
- Supports record and query of operation and system logs
- Provides Socket and OPC interfaces for user secondary development
- Batch upload and download of configuration files, along with multiple simultaneous software upgrades by built-in FTP server

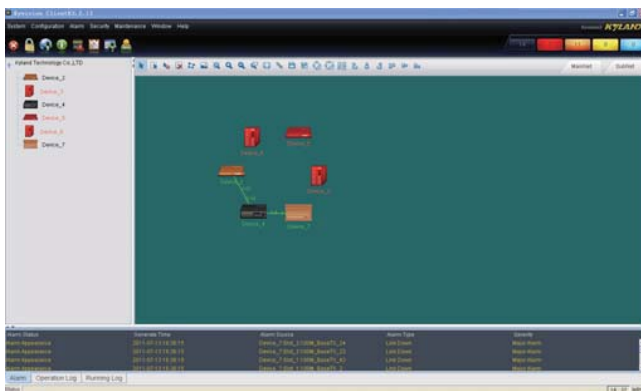
### Overview

Kyvision is the network management software designed by Kyland for monitoring, configuring and maintaining industrial Ethernet switches industrial communication network as well as other RFC1213-compliant devices.

Designed according to TMN regulations, its management functions include facility management, alarm management, right management, topology management and configuration management. Meanwhile, Kyvision provides maintenance functions to cope with different access networks such as topology interface, topology connecting display, topology alarm association display, operation diary record and so on, making it more convenient and efficient for users to maintain and update networks. Kyvision is suitable to work on multiple operation platforms such as Windows, Solaris and Linux.

### Main Interface

Main menu, Toolbar, Topology toolbar, Chinese-English switching button, Alarm quantity bar, Mainnet and subnet buttons, Network topology area, Alarm display area, Navigation tree



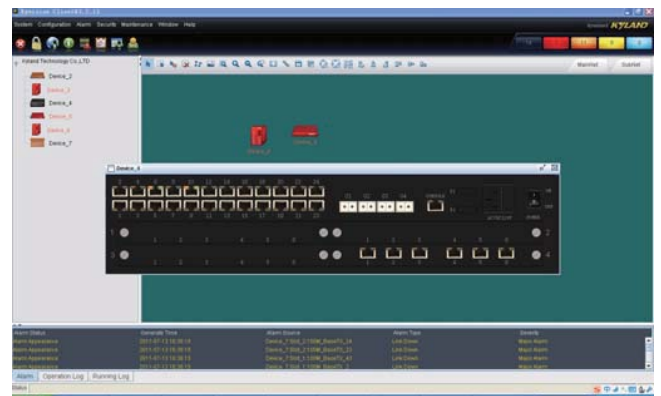
### Topology Management

Supports two types of topology: segment topology and designated IP topology

Two-dimensional display of device topology in the topology interface and display of abnormal communication alarms Auto-detection of Kyland and SNMP devices Auto-generation of network topology through LLDP protocol Provides tools for manual drawing a topology

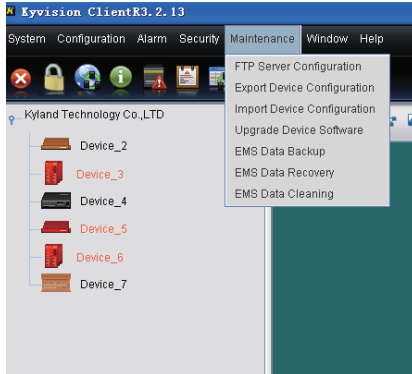
### Configuration Management

Remote diagnosis of device status, monitoring port running status Remote control of device parameters configuration



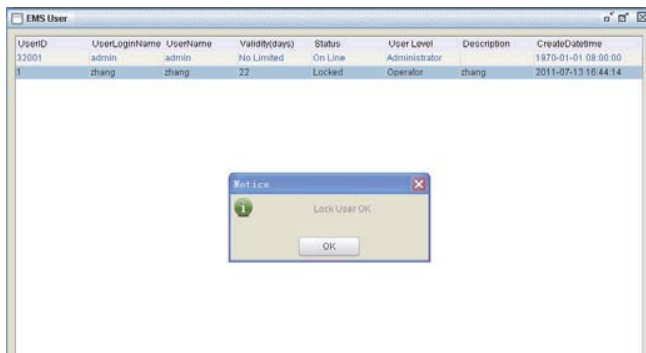
## » Maintenance Management

Supports software update smoothly  
Batch upload and download of configuration files, along with multiple simultaneous software upgrades



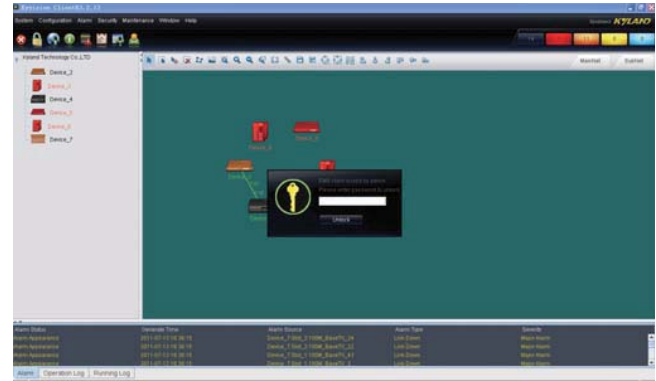
## » Access Control Management

Supports user rights, subnet rights and operation rights em  
Requirements locking function  
User rights include creating administrator, deleting users and modifying user properties  
Subnet rights are to assign manageable subnets to existing users  
Operation rights locking is similar to user locking function of Windows to prevent illegal logon.  
EMS network management provides operation locking and timing locking functions



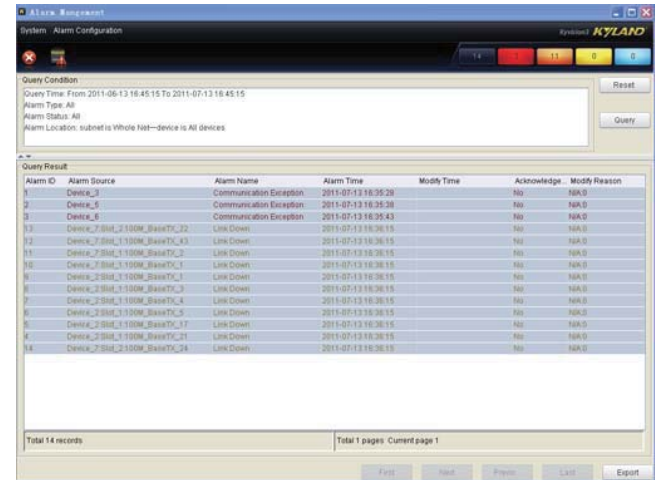
## » Alarm Management

Alarm ring notification and alarm confirmation mechanism  
Supports alarm history query according to subnet, devices, time period  
Support alarm data export  
Real-time error detection through SNMP or Trap  
Emphasizes abnormal devices and connections by particular colors



## » System Requirements

CPU: Pentium 4 1.6 GHz  
Memory: 1.0G  
Available Disk space: 2.0G  
Screen: 1024x768  
Operation System: Windows XP/WIN 7/WIN2003 Server



## » Ordering Information

### Model

Kyvision3.0

### Description

Network management software