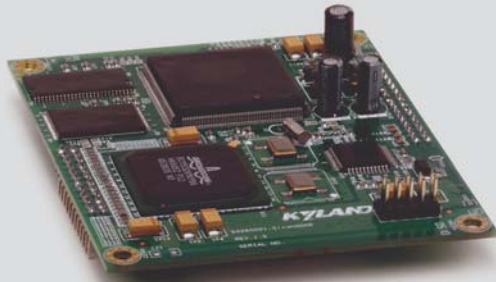


# SICOM3006

## 6 Port Layer 2 Managed Embedded Industrial Ethernet Switch



- 2 10/100Base-T(X) ports, 4 10/100Base-T(X) or 100Base-FX ports
- Embedded mounting and small design simplify integration
- Supports DT-Ring and STP/RSTP



### Overview

SICOM3006 is managed embedded Industrial Ethernet Switch. SICOM3006 supports 2 10/100Base-T(X) ports, 4 10/100Base-T(X) or 100Base-FX ports. SICOM3006 provides 3.15-3.45VDC redundant power inputs. It works in wide operating temperature range from -40 to 85°C, and support Console, Telnet, Web management methods, Kyvision centralized management based on SNMPv1/v2c/v3.

### Software Functions

#### Switching Function

Supports VLAN and PVLAN  
 Supports port trunking  
 Supports flow control based on port  
 Supports port speed limit  
 Supports broadcast storm control

#### Redundancy

Supports the DT-Ring, DT-Ring+ protocols, recovery time<50ms  
 Supports STP/RSTP

#### Multicast

Supports IGMP Snooping  
 Supports GMRP  
 Supports static multicast

#### Service Quality Management

Supporting SP and WRR queuing.

### Management & Maintenance

Supports Console, Telnet and WEB management methods  
 Supports SNMPv1/v2c and centralized management through Kyvision  
 Supports FTP software upgrade  
 Supporting the IP/MAC address conflict alarm, power failure alarm, power alarm, port alarm, and ring alarm  
 Supports RMON  
 Supports port mirroring  
 Supports LLDP  
 Supports Link-check

### Clock Management

Supports SNTP Server/Client

### Product Specifications

#### Technical Specifications

Standards

- ▼ IEEE 802.3i (10Base-T)
- ▼ IEEE 802.3u (100Base-TX and 100Base-FX)
- ▼ IEEE 802.3x (flow control)
- ▼ IEEE 802.1p (priority)
- ▼ IEEE 802.1Q (VLAN)
- ▼ IEEE 802.1D(STP)
- ▼ IEEE 802.1w (RSTP)

#### Switch Properties

Priority Queues	4
Number of VLANs	256
VLAN ID	1-4093
Number of Multicast Groups	256
MAC Table	8K
Packet Buffer	2Mbit

Packet Forwarding Rate 0.9Mpps  
Switching Delay <10μs

**Interface**

- Fast Ethernet Ports
- ▼ 10/100Base-T(X) or 100Base-FX port, 2 connectors with 2x6 pins (J6,J7)
  - ▼ 10/100Base-T(X) port, 1 connector with 2x16 pins (J5)
- Console Port
- ▼ RS232(TXD,RXD), 1 connector with 2x16 pins (J5)

**LED**

- Indicators in the connector with 2x16 pins (J5)
- ▼ Running LED: Run
  - ▼ Ring Alarm LED:Alarm1,Alarm2
  - ▼ Interface LED: Link/ACT,Speed

**Button**

System reset, 1 connector with 2x16 pins (J5)

**Power Requirements**

Power Input 3.3DC(3.15-3.45VDC)  
Power Terminal 1 connector with 2x16 pins (J5)  
Power Consumption <10W

**Physical Characteristics**

Dimensions  
▼ 95mmx25mmx80mm (3.74 inx0.98 inx3.15 in)(WxHxD)  
Weight 50g (0.110 lb)  
Mounting Embedded mounting

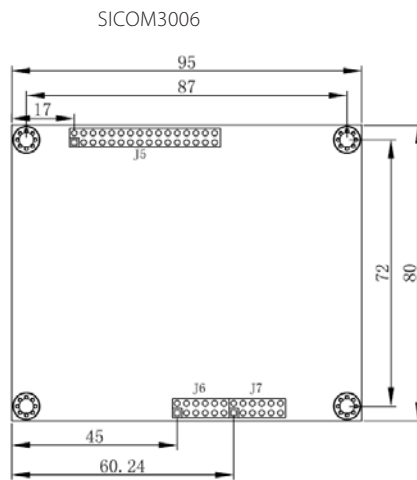
**Environmental Limits**

Operating Temperature -40°C --+ 85°C (-40°F - 185°F)  
Storage Temperature -40°C --+ 85°C(-40°F - 185°F)  
Ambient Relative Humidity 5-95% (non-condensing)

**Quality Assurance**

MTBF 469,065 hrs  
Warranty period 5 years

» Mechanical Drawing



» Ordering

**Product Model**

SICOM3006-EM

**Product Description**

2 10/100Base-T(X) ports, 4 10/100Base-T(X) or 100Base-FX ports, 3.15-3.45VDC redundant power inputs