

ADAM-5080

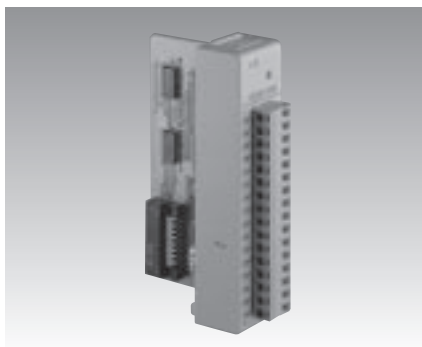
ADAM-5081

ADAM-5090

4-ch Counter/Frequency Module

4-ch High Speed Counter/Frequency Module

4-port RS-232 Module



ADAM-5080



Specifications

General

- **Certifications** CE, FM
- **Connectors** 1 x Plug-in screw terminal (# 14-22 AWG)
- **Power Consumption** 1.5 W (max.)

Counter/Frequency

- **Counter Aux. Function** Initial preset, hi-low alarm setting, alarm digital output mapping, overflag
- **Channels** 4
- **Input Frequency** 0.3 ~ 1000 Hz max. (frequency mode)
5000 Hz max. (counter mode) TTL only
- **Input Level** Isolated or TTL level
- **Isolation Input Level** Logic level 0: 1 V_{max}
Logic level 1: 3.5 ~ 30 V
- **Isolation Voltage** 1000 V_{RMS}
- **Maximum Count** 4, 294, 967, 295 (32 bits)
- **Minimum Input Current** 2 mA (isolated)
- **Minimum Pulse Width** 500 ms (frequency mode)
100 ms (counter mode)
- **Modes** Counter (up/down, bi-direction) frequency
- **Programmable Digital Filter** 1 ~ 65000 µsec (Noise Filter function)
- **TTL Input Level** Logic level 0: 0 ~ 0.8 V
Logic level 1: 2.3 ~ 5 V

Ordering Information

- **ADAM-5080** 4-ch Counter/Frequency Module



NEW

ADAM-5081



Specifications

General

- **Certifications** CE
- **Power Consumption** 1.1 W (Max.)
- **LED** Power/Communication Indicator

- **Channels** 4
- **Maximum Count** 4,294,967,295 (32 bit)
- **Input Frequency** 5 Hz ~ 1 MHz max. (frequency mode)
1 MHz max. (counter mode)
- **Input Level** Isolated or TTL level
- **Minimum Pulse Width** 1µsec. (frequency mode)
1µsec. (counter mode)
- **Minimum Input Current** 2 mA (isolated)
- **Isolation Input Level** Logic level 0: +3 Vdc (max),
Logic level 1: +10 Vdc to 30 Vdc
- **TTL Input Level** Logic level 0: 0 Vdc to 0.8Vdc,
Logic level 1: 2.3 Vdc to 5 Vdc
- **Isolation voltage** 2500 V_{RMS}
- **Modes** Counter (up/down, bi-direction, up, A/B Phase), Frequency
- **Counter Aux. Function** Initial preset, hi-low alarm setting, alarm digital output mapping, overflag
- **Programmable Digital Filter** 1 ~ 65000 µsec (Noise Filter Function)

Ordering Information

- **ADAM-5081** 4-ch High Speed Counter/Frequency Module



ADAM-5090



Specifications

General

- **Certifications** CE
- **Connectors** 4 x RJ-45
- **LED Indicators** TX, RX (each port)
- **Power Consumption** 0.6 W (max.)

Communications

- **Data Bits** 5, 6, 7, 8
- **Data Signals** TXD, RxD, RTS, TS, DTR, DSR, DCD, RI, GND
- **Parity** none, even, odd
- **Ports** 4
- **UARTs** 1 x 16C954 (128-byte FIFO)
- **Speed** 50 ~ 115.2 kbps
- **Stop Bits** 1, 1.5, 2

Note: For ADAM-5510 Series, ADAM-5510KW Series, and ADAM-5511 only

Ordering Information

- **ADAM-5090** 4-port RS-232 Module