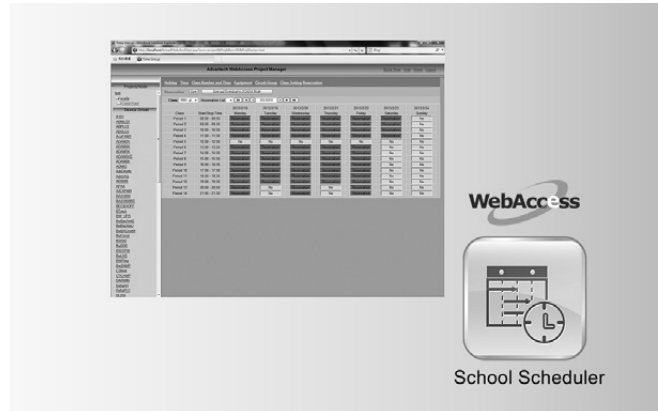


Advantech WebAccess Options - Alarm Management System School Scheduler



Alarm Management System

Features

- Advanced alarm notification management
- Prioritized audio announcement
- Notification group by schedule
- Link multiple receiver group to alarm group

Introduction

WebAccess advanced Alarm Management System (AMS) delivers alarm messages via SMS, email or audio announcement to multiple receivers by predefined alarm group, user group, time schedule and priority setting.

Feature Details

Advanced Alarm Notification Management

In WebAccess Advanced AMS, the system administrator creates, defines, and groups alarms by their characteristics. The administrator also defines users and specifies notification methods, SMS or email information. Users are grouped into work group by time schedule and associated with alarm groups.

Create Notification Group by Schedule

When any tag goes into alarm state, AMS finds out the alarm group it belongs to and the work group corresponding to shift schedule it associates with and notify users, whose priority is lower than the alarm's priority, in the work group with predefined SMS or Email.

Prioritized Audio Announcement

It also checks the alarm with the highest priority, repeatedly plays audio announcement until it is acknowledged.

System Requirements

- **OS** Microsoft® Windows® XP, XP Embedded, Windows 7, Windows 7 Embedded, Windows 8 Desktop Mode, or Windows CE
- **Software Requirements** WebAccess V7.1 Professional

Ordering Information

- **WA-P71-AMGNT** WebAccess Professional Option Alarm management system

School Scheduler

Features

- Set the Setpoints to control lights and equipments
- Classroom Time Periods of the day
- Holiday Schedules
- Reservation function to set the equipment

Introduction

WebAccess School Scheduler provides on/off control and setpoint changes based on time-of-day, day of week and the calendar. Users can control lights, temperature and equipment for saving energy during school days. WebAccess School Scheduler allows the definition of up to 17 periods per day and preserved function for setpoint.

Feature Details

"On/Off" and Setpoint Changes

The "On/Off" can schedule different periods to set the Setpoint, and the Setpoint will follow the schedule setting for saving energy. The "On/Off" also has values specified for each Tag to schedule the Setpoint.

Flexible Periods of the day

The Time specifies the Start Time and Stop Time for each period of the day, up to 17 periods, 16 default periods and one undefined period. Users can follow the school time schedule to set the Setpoint. WebAccess School Scheduler also has reserved function to reserve schedule for Setpoint.

Holiday Schedule

Holiday schedule is defined to handle exceptions to the 7 days per week schedule. The Holiday is any unusual event or series of events. The Holiday Schedule can be defined, redefined and assigned at any time, but usually is defined first to allow easy assignment to the Time Schedules as the "exception" to the schedule.

System Requirements

- **OS** Microsoft® Windows® XP, XP Embedded, Windows 7, Windows 7 Embedded, Windows 8 Desktop Mode, or Windows CE
- **Software Requirements** WebAccess V7.1 Professional

Ordering Information

- **WA-P71-SSCHLE** WebAccess Professional Option School Scheduler