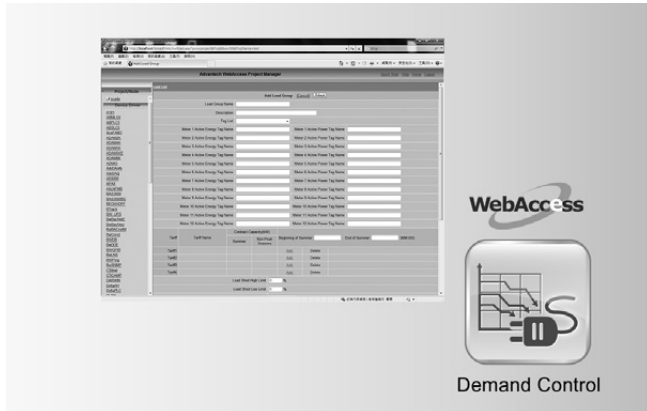


# Advantech WebAccess Options - Demand Control Real-Time Database



Demand Control



Real-time Database

## Demand Control

### Features

- Monitor power consumptions and project demand in next demand interval
- Shed the load if consumption approaches warning level
- Release the load when the demand is satisfied
- Two operating modes: Control and monitor only modes
- 6 Priority levels for shedding load group
- Supports minimum release time, minimum shed time and maximum shed time
- Sliding Windows algorithm for projection

### Introduction

The Advantech WebAccess Demand Control feature helps users save money by limiting the energy usage when the system's demand approaches a predefined warning level. The WebAccess Demand Control System continuously monitors the system's power consumption and projects the demand for the next demand interval. If the projected demand approaches a predefined limit, usually the peak contract demand, the system selectively turns off equipment like lights and fans, adjusts analog set-point to reduce the power consumption or prompts a text message to remind the user to save energy.

### Feature Details

#### Control Mode and Monitor Only Mode

In "Control Mode", the DC program sheds/reloads the load to manage the energy consumption. "Monitor Only" mode evaluates the power consumption and simulates the shed operation, but it does not send the control signal to the devices. Monitor mode allows users to test and verify their system.

#### Define up to 99 Control Groups

In WebAccess Demand Control, users can define up to 99 control groups. In each group, users can define control strategy to limit peak energy usage.

#### Release and Shed the Load

By monitoring total energy consumption readings from meters using a sliding-window algorithm the DC program sheds loads as needed to ensure the projected demand does not exceed a specified tariff target. The shedding process is based on user-defined prioritized load groups.

#### Minimum Release Time

Minimum shed time and maximum shed time are applied to decide the shed and procedure release.

### System Requirements

- **OS** Microsoft® Windows® XP, XP Embedded, Windows 7, Windows 7 Embedded, Windows 8 Desktop Mode, or Windows CE
- **Software Requirements** WebAccess V7.1 Professional

### Ordering Information

- **WA-P71-DCTRLE** WebAccess Professional Option Demand Control

## Real-Time Database

### Features

- Super fast data access and storage
- Supports redundancy for WebAccess
- Fully integrated with WebAccess
- Built-in with WebAccess, no extra installation required
- Archive and delete obsolete data with automatic maintenance schedules
- API for 3rd party programs to Read/ Write/ Modify

### Introduction

The Advantech WebAccess Real-Time Database (RTDB) feature allows WebAccess to store and retrieve a large amount of data in real-time.

### Feature Details

#### High Speed and Large Quantity Data Access

Unlike generic relational databases, WebAccess RTDB is designed to meet industrial high speed and large quantity data access requirements.

#### Fully Integrated with WebAccess

With the fully integrated design, users do not need to learn how to operate the database. Just by enabling the usage of RTDB in WebAccess configuration page, WebAccess SCADA node can then take advantage of this high performance data base. Data from sensors, I/O devices, and RTU or PLC registers are collected by WebAccess and stored to RTDB in very high speed while other users can view or retrieve those data in WebAccess View simultaneously.

#### Support Redundancy for WebAccess

With special data compression and access algorithms, WebAccess RTDB can serve data at a rate of millions of records per second. WebAccess database maintenance features automatically archive and delete obsolete data.

### System Requirements

- **OS** Microsoft® Windows® XP, XP Embedded, Windows 7, Windows 7 Embedded, Windows 8 Desktop Mode, or Windows CE
- **Software Requirements** WebAccess V7.1 Professional

### Ordering Information

- **WA-P71-DB50HE** WebAccess Professional Option RTDB 5,000
- **WA-P71-DB64KE** WebAccess Professional Option RTDB 64,000